

## > APPLICATIONS

### PUBLIC SAFETY

- Police and Fire Communications
- Emergency Medical Service
- Homeland Security Applications
- Mobile Command Centers
- Private/Corporate Security

### UTILITIES

- Natural Gas Wellhead Monitoring
- Transmission Line Flow Meters
- Energy Management Systems
- Capacitor Bank Control

### FIELD FORCE AUTOMATION

- Power Utilities
- Water and Sewer
- Cable and Communications
- Heating and Air Conditioning

### TRANSPORTATION

- Traffic Measurement
- Traffic Control
- Variable Message Signs

### FINANCIAL

- Automated Teller Machines
- Point-of-Sale Machines
- Lottery Machines

## > APPLICATION INTERFACES

Standard interfaces include:

- AT command set
- Host TCP/IP stack communicates with Raven via PPP
- Windows 95/98/2000/NT/XP Dial Up Networking communicates with Raven using PPP

## > SPECIAL FEATURES

- Class I Div 2 Certified
- High speed data transfer rate
- Low power consumption
- Proven technology in compact form-factor
- Rugged aluminum case
- Multiple LEDs for real-time status indication
- Optional mounting brackets

## A PROVEN SOLUTION

For over a decade, AirLink Communications has been providing reliable wireless data solutions for various industrial and enterprise markets, including applications for M2M, SCADA, Telemetry, POS, Mobile Data, Public Safety, Security, and many more. The Raven EDGE is the latest in AirLink's long line of best-in-class intelligent wireless modems. With a robust set of features specifically designed for complex mobile data and remote monitoring and control applications, the Raven has what it takes to make your wireless application a reality.



## FEATURES AND FLEXIBILITY

With quad band support for EDGE high-speed data connectivity as well as backwards compatibility with GPRS, Circuit-Switched (GSM), and SMS, the Raven is a powerful and flexible device that serves all your wireless data needs. The Raven EDGE can be used in many different ways:

### High-Speed, Quad Band EDGE Data Connections

- Rugged device for EDGE mobile data connections
- High-speed connectivity for any PC or handheld
- Backup network connectivity for routers and servers
- Physical connectivity options include Serial or Ethernet

### Remote Data Acquisition Connections

- TCP/UDP/Telnet Serial Device Server
- Embedded applications for SCADA/Telemetry
- Support for standard and custom serial data protocols including Modbus ASCII and RTU, BSAP, DNP and more

### Circuit-switched cellular installations

- Cost-effective replacement for landline dialup circuits or analog cell-phones
- Backup for out-of-band network device management
- Software selectable between circuit-switched (GSM) dial-up and packet-switched EDGE/GPRS

### SMS (Short Message Service) applications

- Easy-to-use interface to the EDGE SMS network
- Software selectable between SMS and EDGE packet
- Open interface for application developers

## > SPECIFICATIONS

### QUAD BAND EDGE:

- Quad Band EDGE (850/1900 MHz and 900/1800 MHz)
- EDGE (MS Class 10) w/ GPRS (MS-12) Fallback
- Coding Schemes 1-9, Full PBCCH Support

### AIRLINK EMBEDDED OPERATING SYSTEM (ALEOS)/STAND ALONE ARM 7 $\mu$ P:

- TCP/IP Stack, UDP, PPP, Std AT Commands
- Supports Countless Device Protocols
- Security/Encryption Features
- Persistent Connectivity, Remote Configuration & Control
- Dynamic DNS, Protocol Spoofing
- OTA Updates and More

### ROBUST POWER SUPPLY

- 10 – 28 VDC

### PHYSICAL CHARACTERISTICS:

- Weight: <1 lb
- Dimensions: 3" Wide x 1.2" High x 5.1" Long (7.6cm x 3cm x 13cm)
- Connectivity: Serial (RS-232 DB-9F) or Ethernet
- Antenna Connector: 50 Ohm TNC
- Multiple LEDs

### ENVIRONMENTAL:

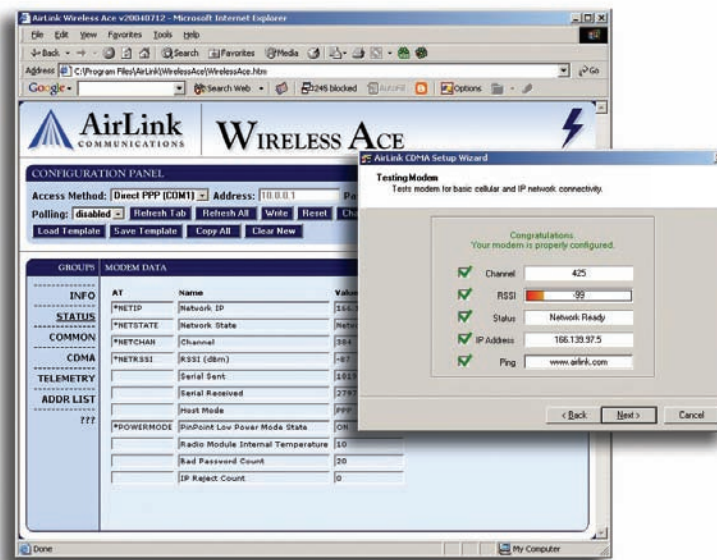
- Operating Temperature: -30 to + 65 °C
- 5% - 95% Relative Humidity (non-condensing)
- Intrinsically Safe - Class 1 Div 2 certified

## WIRELESS ACE

Wireless ACE is a browser-based graphical user interface for configuring and monitoring your intelligent AirLink wireless data platform.

Tens of thousands of AirLink Ravens are currently installed enabling two-way communications with remote assets across many industries. Using Wireless ACE, support personnel can access an AirLink Raven from anywhere at any time to see how it is operating or to change parameter settings.

The unique capabilities of wireless reduce the overall deployment and support costs throughout the life cycle of a communications project.



ACE templates enable efficient programming of Ravens for large-scale deployments

## ABOUT AIRLINK

AirLink Communications, Inc., founded in 1993, delivers wireless data solutions that enable pervasive connectivity to fixed and mobile assets. The company's continued industry leadership is based on its reputation for making complex wireless data solutions work. AirLink proactively designs and commercializes products based on a clear understanding of evolving customer needs. The company maintains strong working relationships with carriers, dealers and solutions providers. Its devices are broadly certified on all major wireless networks in North America. AirLink's multi-tiered product suite includes both hardware and comprehensive software.