

MDS InSite™

Radio System Management Software
Version 6i - Internet Ready Diagnostics



Benefits/Performance Parameters

- HTML web server
- HDML cell phone server
- Network-wide diagnostics
- Enterprise-wide connectivity
- Non-intrusive alarm and diagnostic polling
- Over-the-air monitoring and adjustment of key radio parameters
- Internet e-mail / pager notification of alarms
- NetworkView™ displays-system configurations graphically
- All data is available through OPC, DDE, ODBC, spreadsheet files, and on-screen graphics
- Dial-up networking for SMTP e-mail and TCP/IP connections

Features

- Built-in RTU Simulator
 - A software RTU Simulator can be enabled on any radio in the network to verify RF link quality and radio configuration
- Network-wide Radio Configuration
 - Remote radio parameters can now be configured over the RF link
 - Some configuration parameters include: Data Rate & Format, Buffer Mode, Software RTU Simulator, CTS Delay, Power Level, SCD Delay, Time Out Timer, TDD Mode, Send Count, Device Type, and Tx/Rx Frequency
- Non-Intrusive Alarm and Diagnostic Polling
 - Continuous or scheduled alarm polling for all MDS network wide radios
 - Non-intrusive polling – respects user (payload) data-flow through the network
- Alarm Notifications via E-mail or Pager
 - E-mail or pager notifications using SMTP
 - User selectable notifications for: Radio Alarm, Communications Alarm, and Scheduled Poll Completion
- Graphical Display of Alarm Collection Data
 - Color keyed boxes easily identify alarmed radios
 - Easy point and click feature allows user to view details of alarm conditions or add newly installed radios to the system
- Enterprise Connectivity
 - ODBC feature routes diagnostic and alarm data directly to local or remote databases
 - Dynamic Data Exchange (DDE) server allows other Windows SCADA applications to receive data on the same computer or across a network
 - TCP/IP connectivity to the radio system using a remote access server
 - SMTP (Email) notification for all radio alarms sent to 10 recipients
- Dial-up Networking for TCP/IP connections and SMTP e-mail alarm notification
- Automatic Radio Search
 - An equipment list can be automatically created by searching up to 10,000 radios in 30 minutes

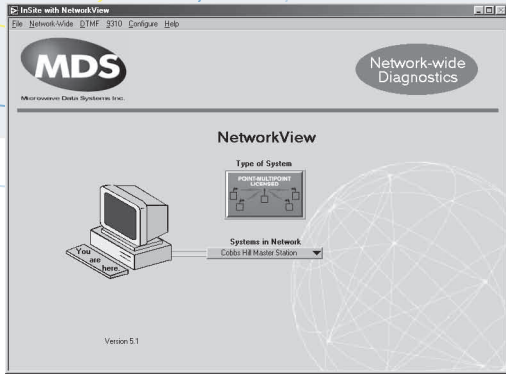
Product Overview

MDS InSite™ 6i Radio System Management Software allows network-wide control and monitoring of MDS multiple address (MAS) master stations, MDS LEDR™ point-to-point radios, remote radios, spread spectrum radios, tail-end links and repeater stations through the use of a personal computer.

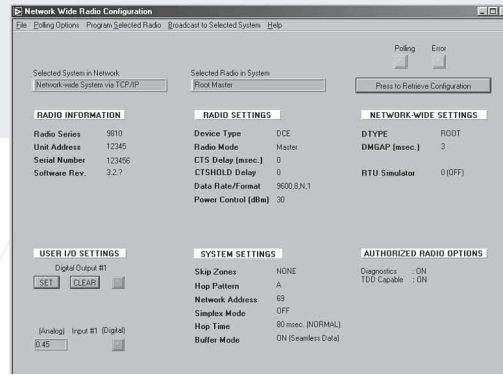
MDS InSite™ 6i is a powerful software tool for keeping your radio system operating at peak performance, and for detecting minor problems before they become a threat to radio network operations. This software is compatible with any personal computer running Microsoft Windows 95, 98, ME or NT™, including laptops and portables with 800 x 600 display resolution. This permits InSite 6i to be used for field diagnostics as well as daily radio system monitoring from a central location. In addition, Version 6i has non-intrusive alarm and diagnostic polling, E-mail notification, and flexible display/archiving capabilities. For the latest in system diagnostics and maintenance, specify GE MDS radio products and MDS InSite™ 6i Radio System Management Software.



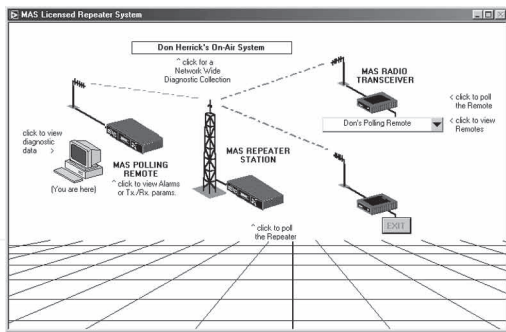
MDS InSite™ Specifications



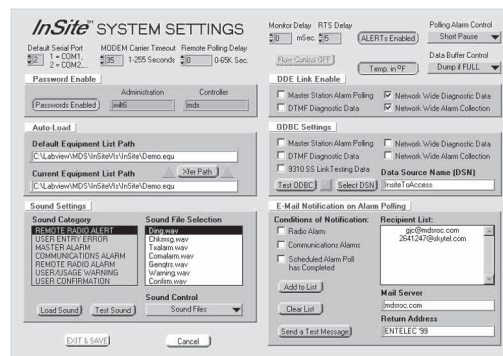
InSite's Start-up screen provides direct access to all program features with a drop-down menu. Managing your radio system has never been easier.



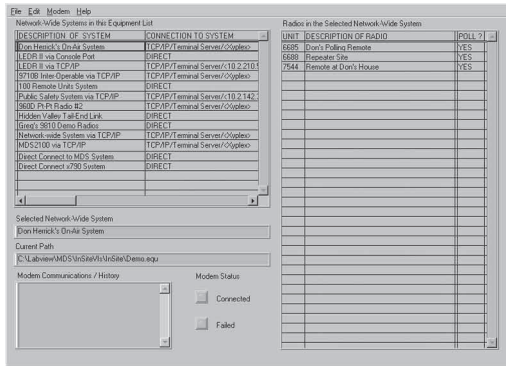
Any radio can be configured over the RF link. Radio information can be collected non-intrusively from every radio in a single polling cycle.



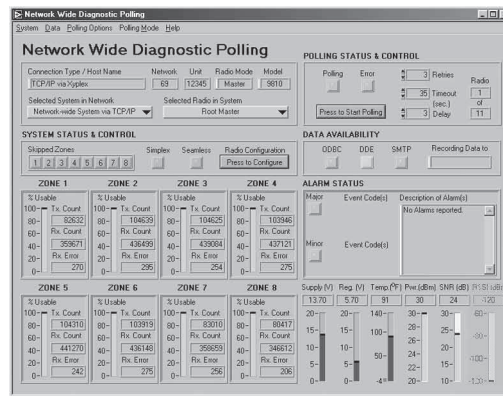
For example, new Network-View screens display the general layout of a system graphically. Users simply click on system icons to view diagnostic data or perform on-demand polling.



The System Settings screen allows full control of program preferences, as well as e-mail alarm notifications via a local network or the Internet.



The Equipment List allows you to configure your network so that the operator simply chooses a site name, rather than referencing a polling address or manually typing in phone numbers.



The new Network-wide Diagnostic Polling screen allows non-intrusive polling of all latest generation MDS (DSP-based) radios. Diagnostic Data can be saved to disk or made available via DDE & ODBC.

Specifications

- System Requirements:
 - Windows 95, 98 or NT™
 - 32 Megabytes RAM—minimum (64 Megabytes recommended)
 - 25 Megabytes of hard drive space
 - SVGA Monitor with 800 x 600 display resolution and support for 256 colors or 16 bit high color
- Computer-to-Radio Cable: Standard RS-232
- Program Support: CD-ROM with MDS InSite™ 6i software, online help, and User's guide (PDF)
- MDS Equipment support: MDS InSite™ 6i requires the latest generation DSP-based transceivers or MDS LEDR™ radios.



GE MDS
 175 Science Parkway
 Rochester, New York 14620, USA
 Phone (585) 242-9600
 Fax (585) 242-9620
 www.gemds.com

GE MDS products are manufactured under a quality system certified to ISO 9001. GE MDS reserves the right to make changes to specifications of products described in this data sheet at any time without notice and without obligation to notify any person of such changes.

© 2000 MDS Inc. (Part No. InSite) SL0025 Rev. L, 03-07-07